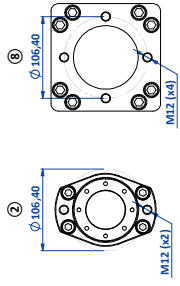
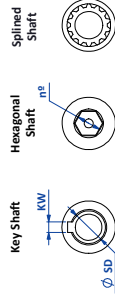


FLANGE TYPES

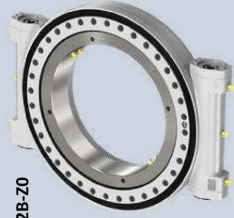


SHAFT TYPES

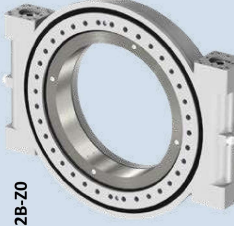


SIZES

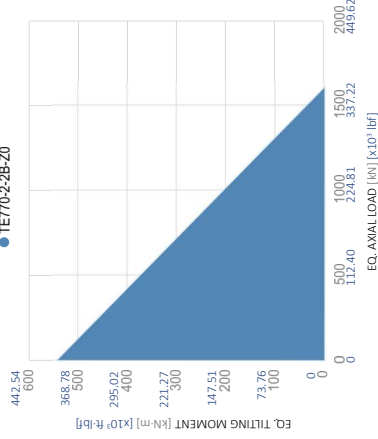
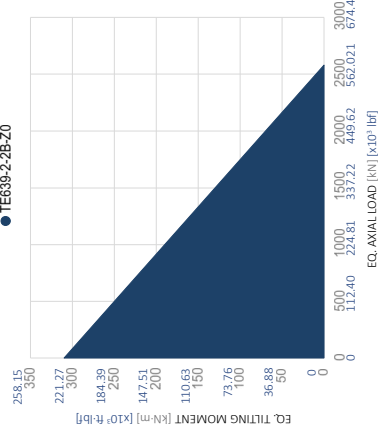
TE639-2-2B-Z0



TE770-2-2B-Z0



MOMENT LOADING CHARTS



RATINGS

	TE639-2-2B-Z0	TE770-2-2B-Z0
Min. input torque	N·m 1.48	N·m 1.48
	ft·lbf 7.38	ft·lbf 7.38
Gear ratio	125:1	108:1
Efficiency	40%	40%
Max. torque	kN·m 54.90	kN·m 58.00
	x10³ ft·lbf 40.49	x10³ ft·lbf 42.78
Nominal torque	kN·m 42.10	kN·m 42.78
	x10³ ft·lbf 31.05	x10³ ft·lbf -
Holding torque	kN·m 105.70	kN·m 275.00
	x10³ ft·lbf 77.96	x10³ ft·lbf 202.83
Tilting moment	kN·m 310.00	kN·m 540.00
	x10³ ft·lbf 228.64	x10³ ft·lbf 398.28
Radial static load	kN 1300.00	kN 1600.00
	x10³ lbf 292.25	x10³ lbf 359.69
Axial static load	kN 2580.00	kN 4000.00
	x10³ lbf 580.01	x10³ lbf 899.24
Max. outputs speed	rpm 1	rpm < 1.50
Weight	kg 149.55	kg -
	lbs 329.7	lbs -
Paint	RAL7040	RAL7040

DIMENSIONS

	TE639-2-2B-Z0		TE770-2-2B-Z0	
	mm	in	mm	in
Ø OD	672	26.46	832	32.76
Ø ID	432	17.01	512	20.16
Ø OCD	584	22.99	675	26.57
P x n°	M20 ↓40 mm x 36			
Ø ICD	465	18.31	560	22.05
F x n°	M20 ↓40 mm x (36-2)			
DH	123	4.84	151	5.94
CD	339,10	13.35	416	16.38
A	403,60	15.89	486	19.13
B	88	3.46	90	3.54
C	429	16.89	538	21.18
D	214,50	8.45	272,50	10.73
Ø E	525	20.67	628	24.72
G	27	1.06	47	1.85
H	57,50	2.26	78	3.07
Ø K	525	20.67	620	24.41
Ø L	615	24.21	748	29.45

FLANGES and SHAFTS

	TE639-2-2B-Z0		TE770-2B-Z0	
	mm	in	mm	in
KW	8	0.31	8	0.31
Ø SD	25	0.98	25	0.98
Input	Flange ① Key Shaft Flange ②			
Output	Flange ③ Key Shaft Hex. 24 mm Shaft Hex. 21 mm Shaft			